



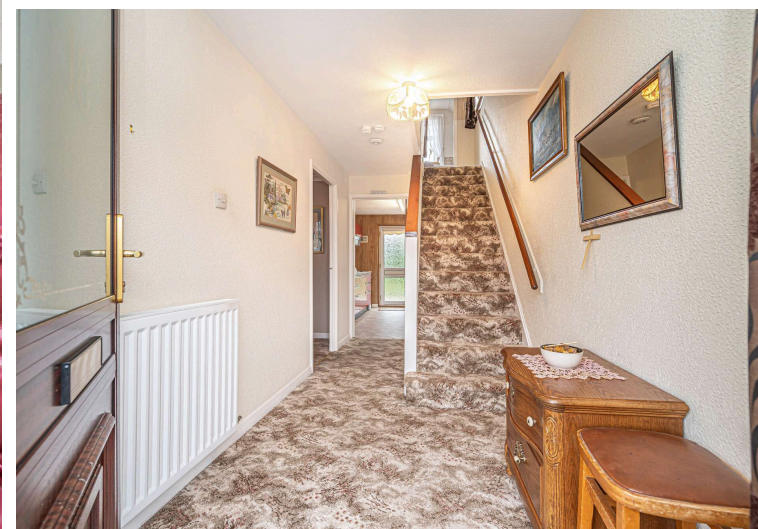
Morgans

PROPERTY

18 Heather Grove, Dunfermline, KY11 8DB

Offers Over £230,000





Entrance Hallway



Three bedrooms



Lounge



Built-in storage throughout



Kitchen Dining Room



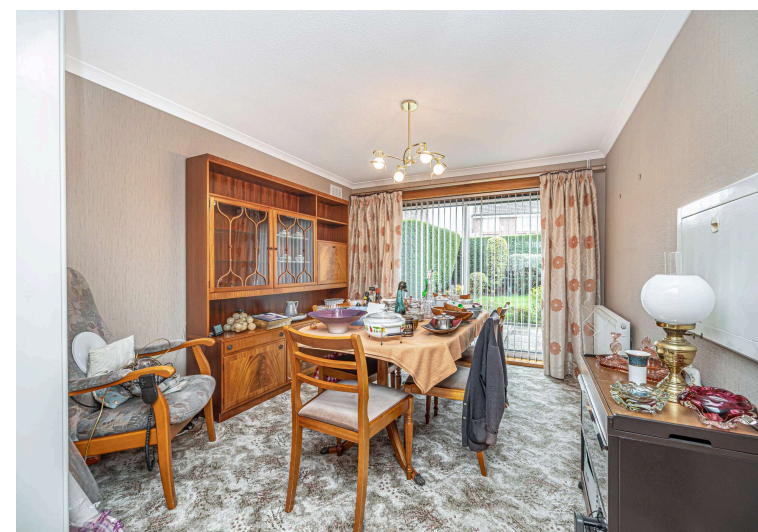
Integral garage



EPC Rating -



Council Tax Band -





Welcome

This three-bedroom detached home offers well-proportioned accommodation over two floors, suitable for a family or those seeking a comfortable and practical home in a popular Dunfermline setting. The ground floor provides a good-sized living room, a separate dining room, and a fitted kitchen, along with a useful storage cupboard off the hall. The first floor comprises three bedrooms — two of which are generous doubles — all served by a family bathroom. Built-in storage is provided to each bedroom and on the landing. The property further benefits from a driveway leading to detached single garage and well maintained gardens to the front and rear. Situated in the ever popular Pitcorthie estate the property is conveniently placed for local amenities, schools, and transport links.





EXTRAS INC. IN SALE/AGENTS NOTE

All floorcoverings, blinds, bathroom and light fittings together with integrated appliances.

From 1st February 2022, residential properties in Scotland are required by law to have installed a system of inter-linked smoke alarms, carbon monoxide detectors and heat detectors (the "inter-linked system"). No warranty is given that any interlinked system has been installed in this property and interested parties should make their own enquiries.





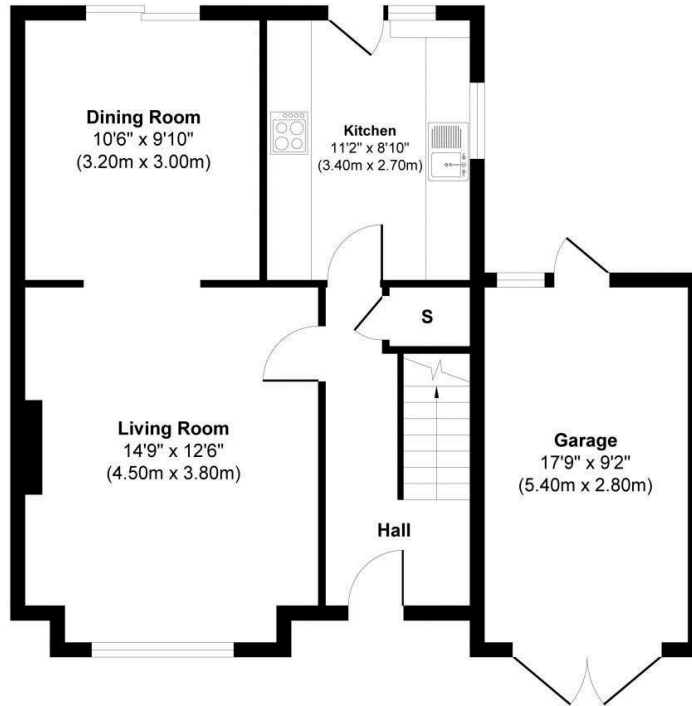
Dunfermline

The ancient capital of Dunfermline won its bid to have official status city in May 2022, as part of the civic honour's competition to celebrate the Queen's platinum jubilee. The City of Dunfermline is of considerable historic interest and is the resting place of King Robert the Bruce. Carnegie's Birthplace museum, the Abbey and Abbot House reflect the historic interest of the city, whilst recent developments have seen Dunfermline move into the modern era with Carnegie Museum and Library. Dunfermline is located approximately five miles from the Forth bridges and is therefore particularly popular with commuters to Edinburgh and many parts of the central belt with easy access to the M90 motorway with its direct links to Edinburgh, Perth and Dundee and across the Kincardine Bridge by way of motorways to Stirling, Glasgow and the West. It benefits from a full range of shops, social and leisure facilities and educational establishments. The local railway stations provide a regular service to Edinburgh with intercity links to other parts of the UK. There are regular and convenient bus services both local and national.

Morgans Property Package

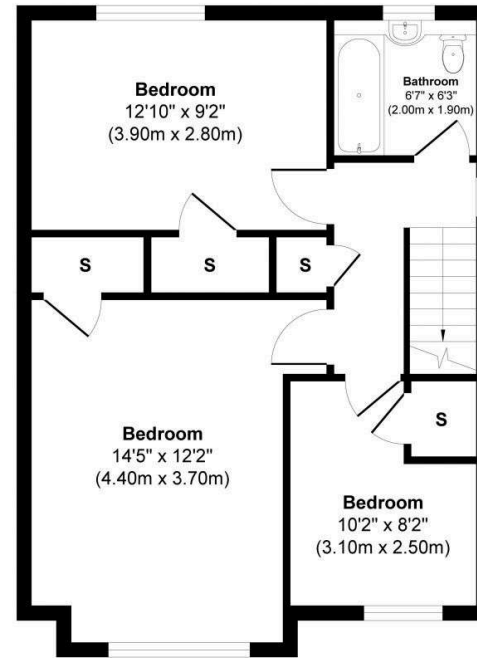
We provide the complete buying and selling package including a comprehensive estate agency service and full legal service. For a FREE PRE-SALE VALUATION, estimate and market appraisal without cost or obligation, contact us.





Ground Floor
Approximate Floor Area
530 sq. ft
(49.24 sq. m)

Garage
Approximate Floor Area
143 sq. ft
(13.27 sq. m)



First Floor
Approximate Floor Area
530 sq. ft
(49.24 sq. m)



Approx. Gross Internal Floor Area 1203 sq. ft / 111.75 sq. m (Including Garage)

This floor plan is for illustrative and marketing purposes only and is to be used as a guide only. No details are guaranteed on measurements, floor areas, or orientation and do not form any agreement. No liability is taken for error, omission or misstatement. A party must rely upon its own inspection(s). Created by 9AM Media



SOLICITORS | PROPERTY
33 East Port, Dunfermline, Fife, KY12 7JE
Tel: 01383 620222 Fax: 01383 621213
www.morganlaw.co.uk



AGENTS NOTE These particulars do not form part of any contract and the statements or plans contained herein are not warranted nor to scale. Approximate measurements have been taken by electronic device at the widest point. Services and appliances have not been tested for efficiency or safety and no warranty is given as to their compliance with any Regulations. No movable items will be included in the sale.