



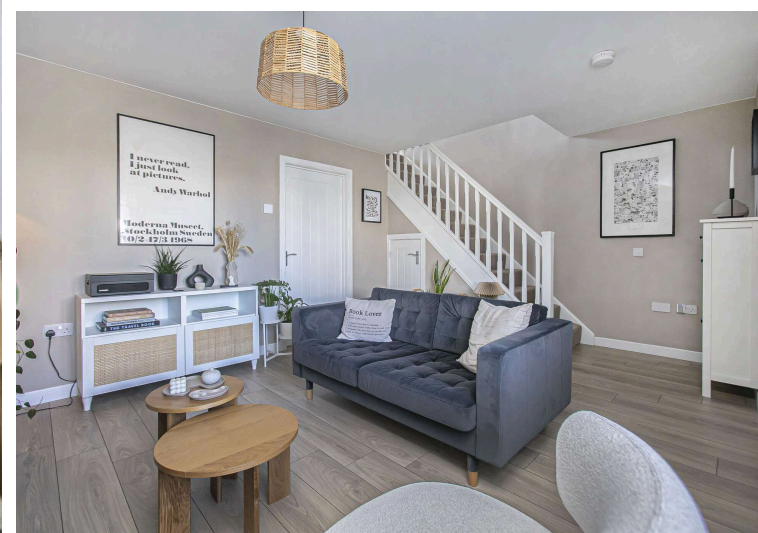
Morgans

PROPERTY

27 Reid Place, Dunfermline, KY12 9FL

Offers Over £250,000





Three-bedroom semi detached home



Ground floor cloakroom/W.C.



Spacious living room



First floor bathroom



Open kitchen/family area



Two generous double bedrooms



EPC Rating -



Council Tax Band - E





## Welcome

This three-bedroom semi detached home offers well-proportioned accommodation over two floors, suitable for a first-time buyer, couples or families. The ground floor provides a spacious living room and an open kitchen/family area — a practical layout well suited to everyday family life and a cloakroom/W.C. in the hall adds a useful additional facility on this level. The first floor comprises three bedrooms and a bathroom. Two of the bedrooms are good-sized doubles, with the third suitable for use as a single bedroom, nursery, or home office. Situated in Dunfermline the property is conveniently placed for local amenities, schools, and transport links and further benefits from fully enclosed rear garden and residents and ample visitors parking.





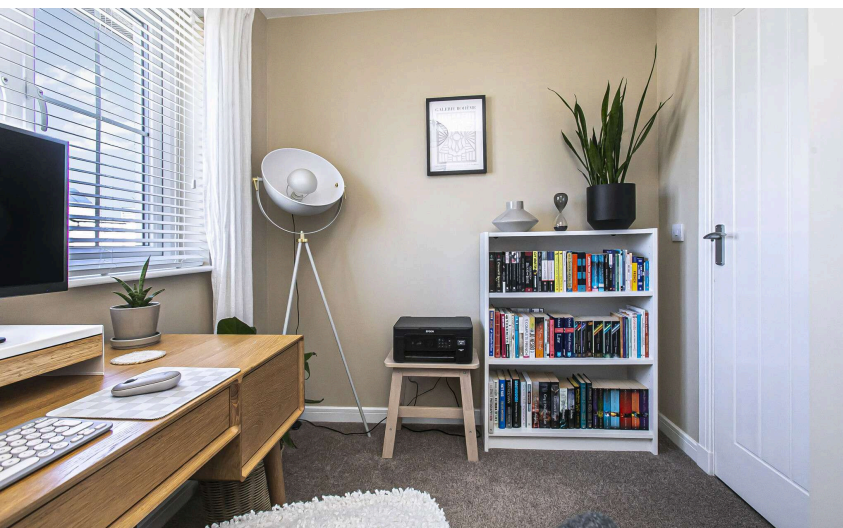
## EXTRAS INC. IN SALE/AGENTS NOTE

All floorcoverings, blinds, bathroom and light fittings together with integrated appliances.

From 1st February 2022, residential properties in Scotland are required by law to have installed a system of inter-linked smoke alarms, carbon monoxide detectors and heat detectors (the "inter-linked system"). No warranty is given that any interlinked system has been installed in this property and interested parties should make their own enquiries.









## Dunfermline

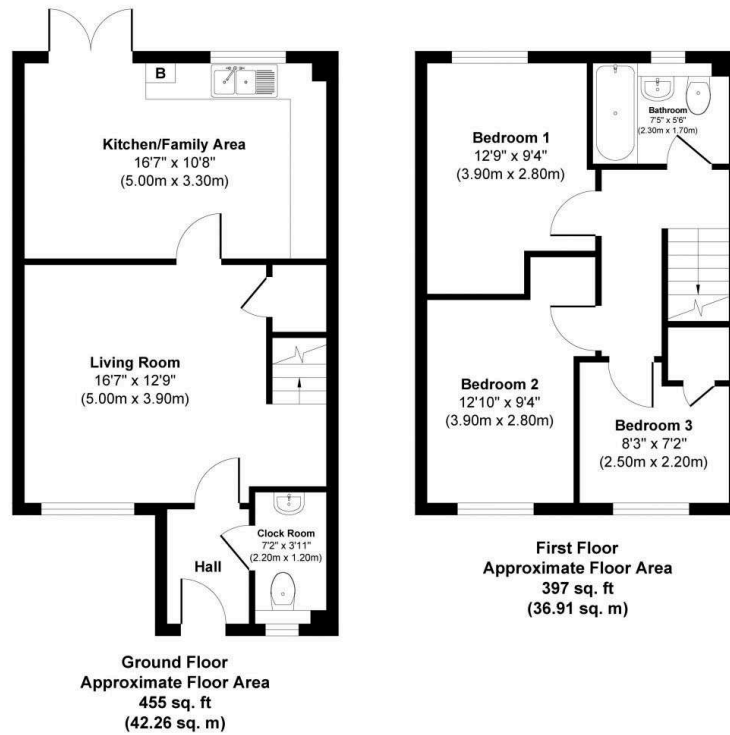
Information about the District to be added here.

## Morgans Property Package

We provide the complete buying and selling package including a comprehensive estate agency service and full legal service. For a FREE PRE-SALE VALUATION, estimate and market appraisal without cost or obligation, contact us.



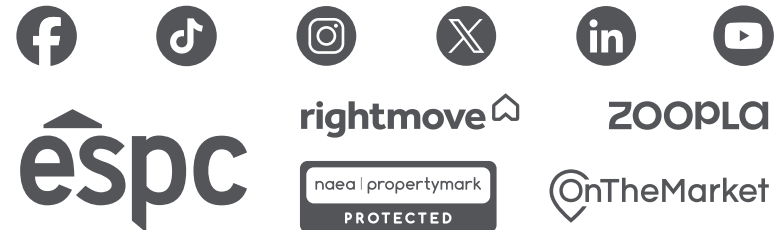
Reid Place, Dunfermline, KY12 9FL



Approx. Gross Internal Floor Area 852 sq. ft / 79.17 sq. m  
Illustration for identification purposes only, measurements approximate, not to scale. Copyright



SOLICITORS | PROPERTY  
33 East Port, Dunfermline, Fife, KY12 7JE  
Tel: 01383 620222 Fax: 01383 621213  
[www.morganlaw.co.uk](http://www.morganlaw.co.uk)



AGENTS NOTE These particulars do not form part of any contract and the statements or plans contained herein are not warranted nor to scale. Approximate measurements have been taken by electronic device at the widest point. Services and appliances have not been tested for efficiency or safety and no warranty is given as to their compliance with any Regulations. No movable items will be included in the sale.