



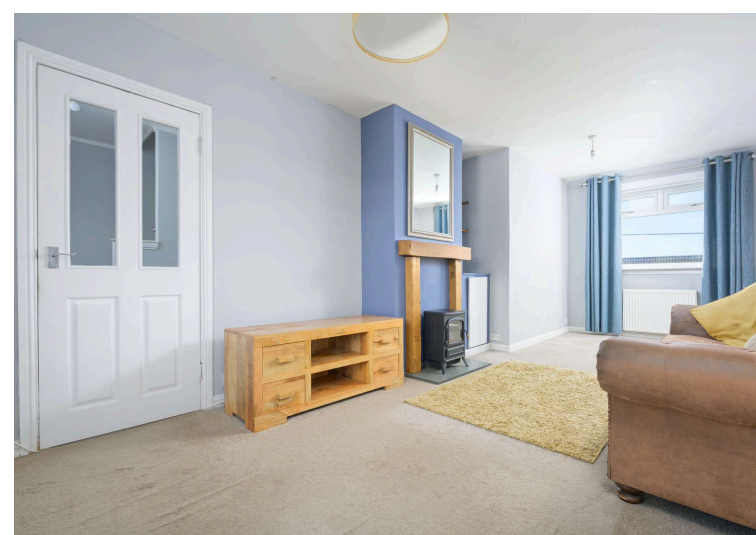
Morgans

PROPERTY

11 Ochil Terrace, Dunfermline, KY11 4BP

Offers Over £135,000





Two-bedroom semi-detached home



Exceptional principal bedroom



Impressive lounge/dining room



Built-in storage throughout



Fitted kitchen



Detached garage



EPC Rating -



Council Tax Band -



## Welcome

This two-bedroom semi-detached home offers well-proportioned and generously sized accommodation over two floors. The ground floor provides an exceptionally spacious lounge/dining room extending to nearly 24 feet in length, fitted kitchen and a storage cupboard. The layout is open and versatile, providing excellent space for both everyday family life and entertaining. The first floor comprises two bedrooms and a bathroom. The principal bedroom is a particularly impressive room, offering outstanding proportions rarely found in a property of this size. The second bedroom is also a comfortable double. Built-in wardrobe storage is provided to both bedrooms, with a further cupboard on the landing. A driveway leads to detached garage provides secure parking or additional storage with private gardens to the front and rear. Situated in Dunfermline, the property is conveniently placed for local amenities, schools, and transport links.





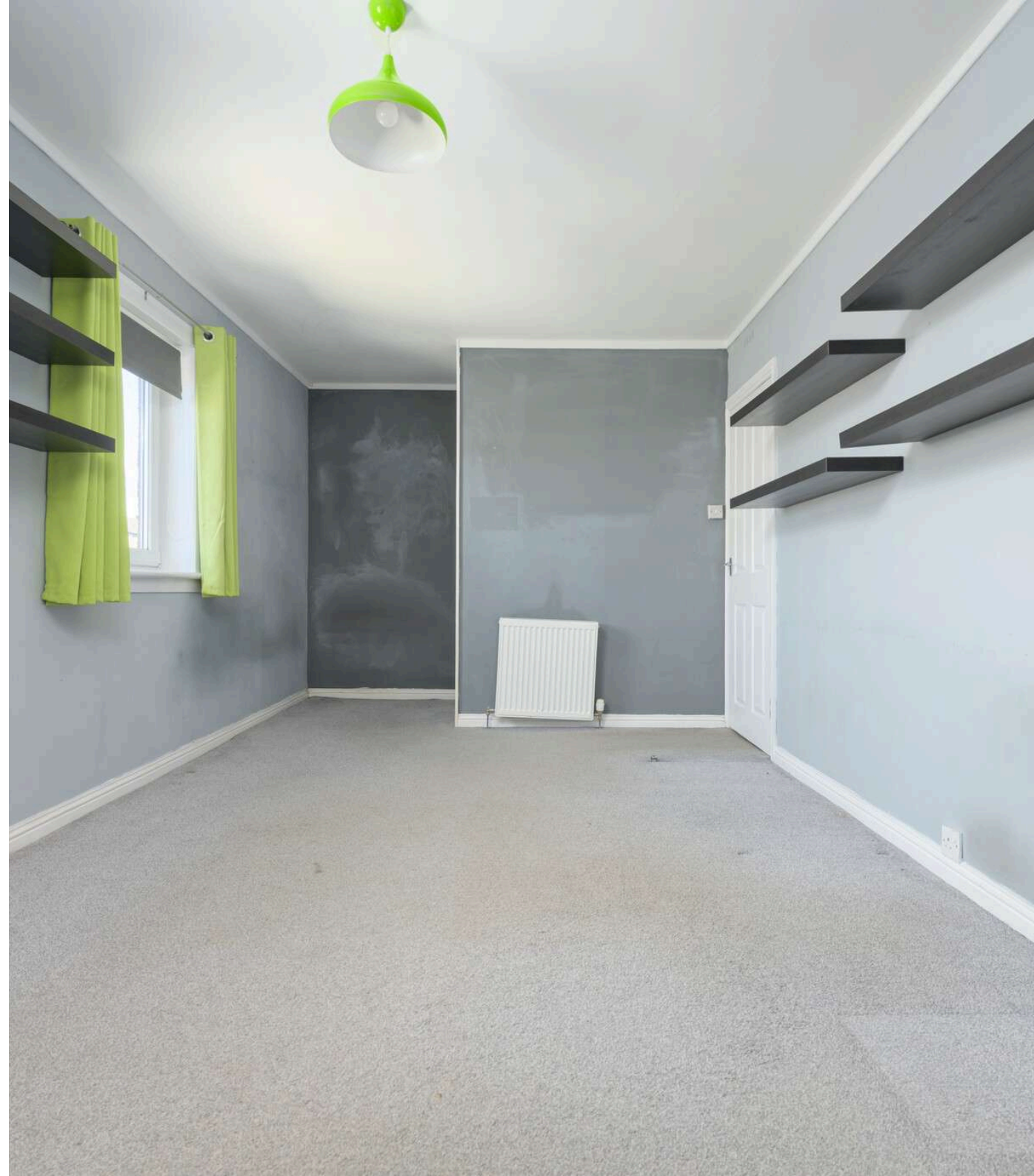
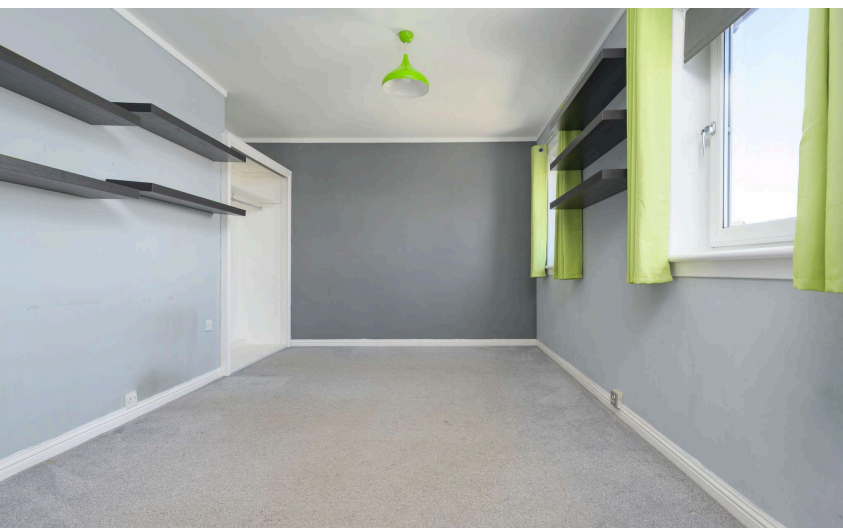
### **EXTRAS INC. IN SALE/AGENTS NOTE**

All floorcoverings, blinds, bathroom and light fittings together with integrated appliances.

From 1st February 2022, residential properties in Scotland are required by law to have installed a system of inter-linked smoke alarms, carbon monoxide detectors and heat detectors (the "inter-linked system"). No warranty is given that any interlinked system has been installed in this property and interested parties should make their own enquiries.









## Dunfermline

The ancient capital of Dunfermline won its bid to have official status city in May 2022, as part of the civic honour's competition to celebrate the Queen's platinum jubilee. The City of Dunfermline is of considerable historic interest and is the resting place of King Robert the Bruce. Carnegie's Birthplace museum, the Abbey and Abbot House reflect the historic interest of the city, whilst recent developments have seen Dunfermline move into the modern era with Carnegie Museum and Library. Dunfermline is located approximately five miles from the Forth bridges and is therefore particularly popular with commuters to Edinburgh and many parts of the central belt with easy access to the M90 motorway with its direct links to Edinburgh, Perth and Dundee and across the Kincardine Bridge by way of motorways to Stirling, Glasgow and the West. It benefits from a full range of shops, social and leisure facilities and educational establishments. The local railway stations provide a regular service to Edinburgh with intercity links to other parts of the UK. There are regular and convenient bus services both local and national.

## Morgans Property Package

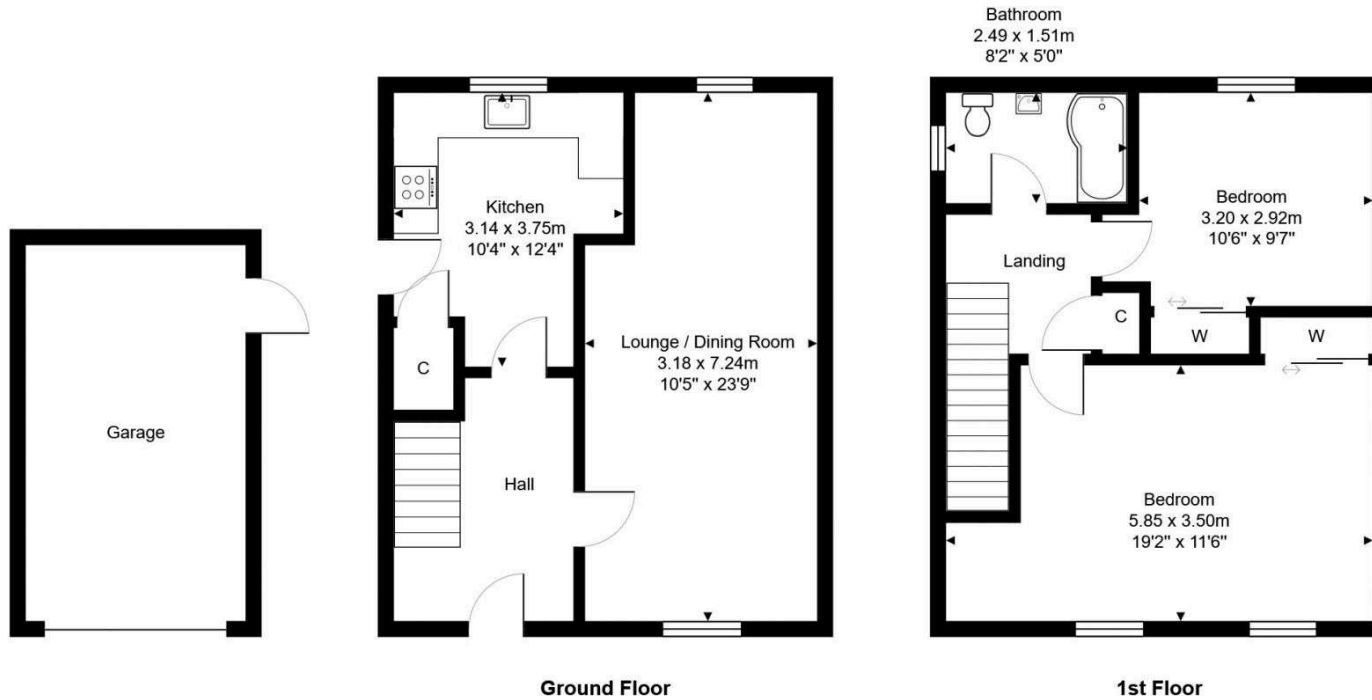
We provide the complete buying and selling package including a comprehensive estate agency service and full legal service. For a FREE PRE-SALE VALUATION, estimate and market appraisal without cost or obligation, contact us.

# 11 Ochil Terrace, Dunfermline, KY11 4BP

Total Area: 99.8 m<sup>2</sup> ... 1075 ft<sup>2</sup>



All measurements are approximate and for display purposes only



SOLICITORS | PROPERTY  
33 East Port, Dunfermline, Fife, KY12 7JE  
Tel: 01383 620222 Fax: 01383 621213  
[www.morganlaw.co.uk](http://www.morganlaw.co.uk)



AGENTS NOTE These particulars do not form part of any contract and the statements or plans contained herein are not warranted nor to scale. Approximate measurements have been taken by electronic device at the widest point. Services and appliances have not been tested for efficiency or safety and no warranty is given as to their compliance with any Regulations. No movable items will be included in the sale.